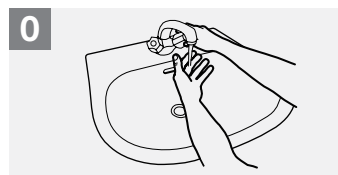


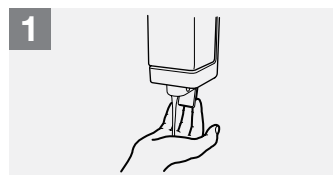
HOW TO HANDWASH?

WASH HANDS WHEN VISIBLY SOILED! OTHERWISE, USE HANDRUB

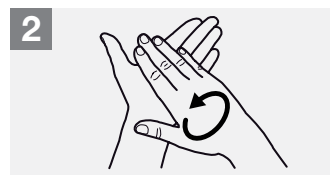
 **Duration of the entire procedure: 40-60 seconds**



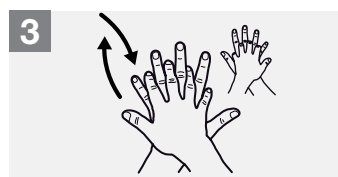
0 Wet hands with water;



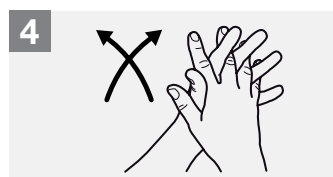
1 Apply enough soap to cover all hand surfaces;



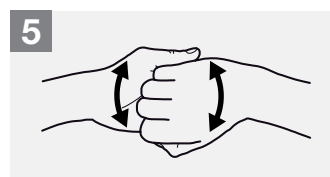
2 Rub hands palm to palm;



3 Right palm over left dorsum with interlaced fingers and vice versa;



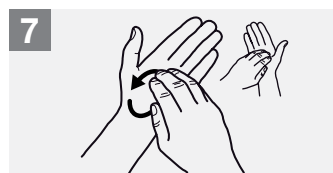
4 Palm to palm with fingers interlaced;



5 Backs of fingers to opposing palms with fingers interlocked;



6 Rotational rubbing of left thumb clasped in right palm and vice versa;



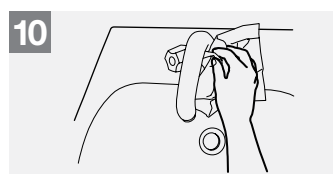
7 Rotational rubbing, backwards and forwards with clasped fingers of right hand in left palm and vice versa;



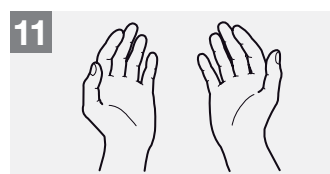
8 Rinse hands with water;



9 Dry hands thoroughly with a single use towel;



10 Use towel to turn off faucet;



11 Your hands are now safe.

Hand care

- Take care of your hands by regularly using a protective hand cream or lotion, at least daily.
- Do not routinely wash hands with soap and water immediately before or after using an alcohol-based handrub.
- Do not use hot water to rinse your hands.
- After handrubbing or handwashing, let your hands dry completely before putting on gloves.

Please remember

- Do not wear artificial fingernails or extenders when in direct contact with patients.
- Keep natural nails short.